

CONNECTOR MANUFACTURERS

TOPTEK®
HARDWARE ELECTRONIC MANUFACTURER

www.toptek-co.com

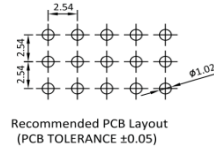
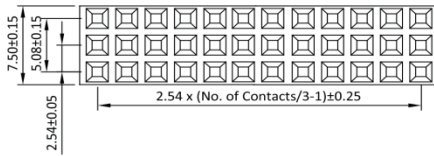
Female Header 2.54mm 3 Row H=8.5mm Pin 0.64x0.60 Elevated

Specifications

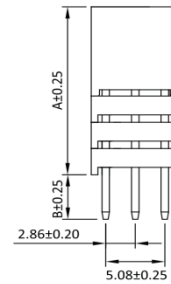
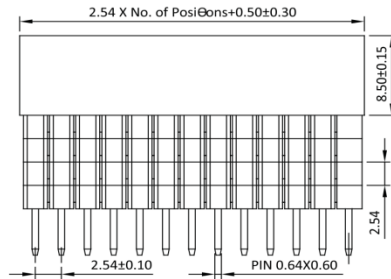
Current Rate: 3 AMP
Insulation Resistance: 1000MΩ Min.
Contact Resistance: 20mΩ Max.
Dielectric Voltage: 1000V AC for one minute
Operation Temperature: -40°C to +105°C

Material

Insulator: Hi-Temp. Thermoplastic, UL 94V-0
Terminal: Copper Alloy
Plating: Gold Plated

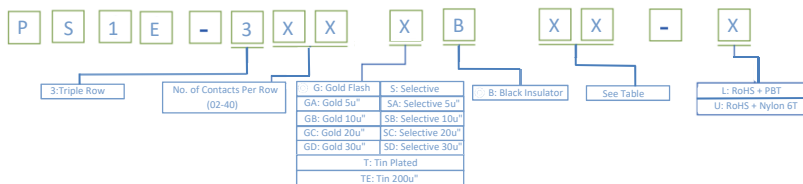


	Dim. A	Dim. B
1B	11.05	7.35
1C	11.05	12.2
1D	11.05	2.30
2A	13.59	4.85
2B	13.59	9.65
3A	16.13	2.30
3B	16.13	7.10
4A	18.67	4.60



Part No.: PS1E-3XX-X

ORDER INFORMATION



©: Standard Recommend

